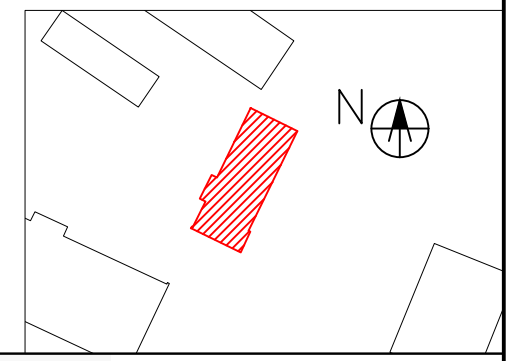



ELEWACJA
POŁUDNIOWO-WSCHODNIA





EKOPROBUD

Biuro projektowe EKOPROBUD
43-190 Mikołów, ul. Żwirki i Wigury 65/206
tel. 501 053 972, www.ekoprobudsc.com.pl

ADRES INWESTYCJI:

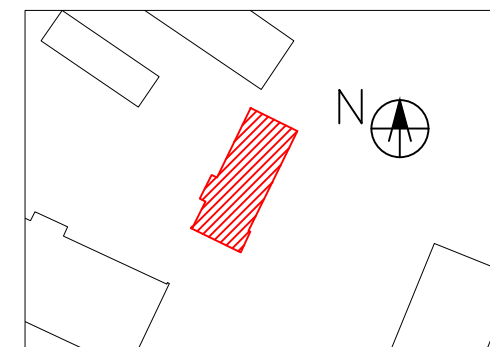
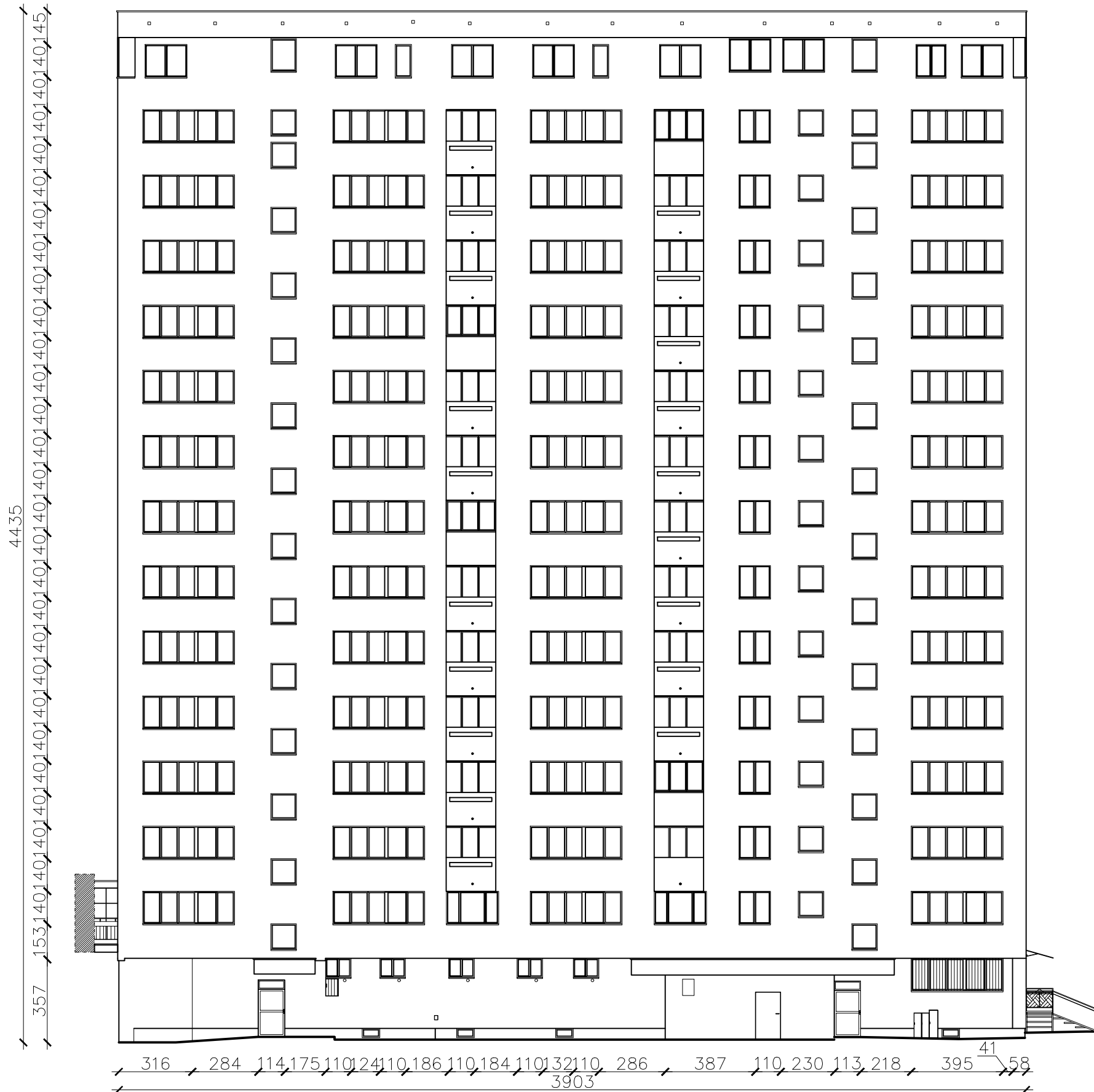
Budynek mieszkalno-usługowy
ul. ks. kard. Stefana Wyszyńskiego 46, 48
43-100 Tychy

REMONT BUDYNKU ZLOKALIZOWANEGO
PRZY UL. KS. KARD. STEFANA WYSZYŃSKIEGO 46, 48

INWENTARYZACJA - ELEWACJA POŁUDNIOWO-WSCHODNIA

| | | | |
|------------------------------|---|---------|-----------------|
| ARCHITEKTURA PROJEKTOWAŁ: | mgr inż. arch. L. Witański nr upr. 743/87 | PODPIS: | 09-2025 |
| SPRAWDZIŁ: | mgr inż. arch. Ł. Wengler nr. upr. 6/10/SLOKK | PODPIS: | SKALA: 1:200 |
| OPRACOWANIE: | mgr inż. N. Kajtoch | PODPIS: | NR RYS.: |
| KIEROWNIK BIURA: | dr inż. T. Muzyczuk | PODPIS: | 1 |

ELEWACJA PÓŁNOCNO-ZACHODNIA



EKOPROBUD

ADRES INWESTYCJI: Budynek mieszkalno-usługowy
ul. ks. kard. Stefana Wyszyńskiego 46, 48
43-100 Tychy

REMONT BUDYNKU ZLOKALIZOWANEGO
PRZY UL. KS. KARD. STEFANA WYSZYŃSKIEGO 46, 48

INWENTARYZACJA - ELEWACJA PÓŁNOCNO-ZACHODNIA

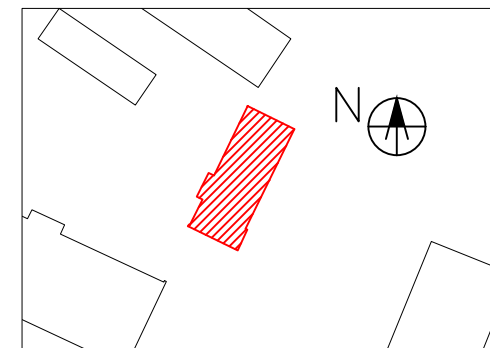
| | | | |
|------------------------------|---|---------|-------------------|
| ARCHITEKTURA PROJEKTOWAŁ: | mgr inż. arch. L. Witański nr upr. 743/87 | PODPIS: | 09-2025 |
| SPRAWDZIŁ: | mgr inż. arch. Ł. Wengler nr. upr. 6/10/SLOKK | PODPIS: | |
| OPRACOWANIE: | mgr inż. N. Kajtoch | PODPIS: | |
| KIEROWNIK BIURA: | dr inż. T. Muzyczuk | PODPIS: | |
| | | | SKALA: 1:200 |
| | | | NR RYS.: 2 |


Architectural floor plan of the 1st floor. The plan shows a long rectangular layout with a central corridor. On the left side, there are several rooms, each with a window. On the right side, there are more rooms, some with windows and some with doors. The plan includes dimensions: 110, 628, 136, 23, 411, 107, 250, 1443, and 38. The total width is 1443 and the total length is 4412.

Architectural drawing of a building facade. The drawing shows a long, narrow structure with a central vertical strip of windows. At the bottom, there is a small entrance area with a door and two windows. Dimensions are provided in feet and inches.

Dimensions (feet and inches):

- Overall width: 44'0"
- Overall height: 115'0"
- Section 1: 132'0" x 171'0"
- Section 2: 171'0" x 228'0"
- Section 3: 139'0" x 40'0"
- Section 4: 140'0" x 40'0"
- Section 5: 140'0" x 40'0"
- Section 6: 140'0" x 40'0"
- Section 7: 140'0" x 40'0"
- Section 8: 140'0" x 40'0"
- Section 9: 140'0" x 40'0"
- Section 10: 140'0" x 40'0"
- Section 11: 140'0" x 40'0"
- Section 12: 140'0" x 40'0"
- Section 13: 140'0" x 40'0"
- Section 14: 140'0" x 40'0"
- Section 15: 140'0" x 40'0"
- Section 16: 140'0" x 40'0"
- Section 17: 140'0" x 40'0"
- Section 18: 140'0" x 40'0"
- Section 19: 140'0" x 40'0"
- Section 20: 140'0" x 40'0"
- Section 21: 140'0" x 40'0"
- Section 22: 140'0" x 40'0"
- Section 23: 140'0" x 40'0"
- Section 24: 140'0" x 40'0"
- Section 25: 140'0" x 40'0"
- Section 26: 140'0" x 40'0"
- Section 27: 140'0" x 40'0"
- Section 28: 140'0" x 40'0"
- Section 29: 140'0" x 40'0"
- Section 30: 140'0" x 40'0"
- Section 31: 140'0" x 40'0"
- Section 32: 140'0" x 40'0"
- Section 33: 140'0" x 40'0"
- Section 34: 140'0" x 40'0"
- Section 35: 140'0" x 40'0"
- Section 36: 140'0" x 40'0"
- Section 37: 140'0" x 40'0"
- Section 38: 140'0" x 40'0"
- Section 39: 140'0" x 40'0"
- Section 40: 140'0" x 40'0"
- Section 41: 140'0" x 40'0"
- Section 42: 140'0" x 40'0"
- Section 43: 140'0" x 40'0"
- Section 44: 140'0" x 40'0"
- Section 45: 140'0" x 40'0"
- Section 46: 140'0" x 40'0"
- Section 47: 140'0" x 40'0"
- Section 48: 140'0" x 40'0"
- Section 49: 140'0" x 40'0"
- Section 50: 140'0" x 40'0"
- Section 51: 140'0" x 40'0"
- Section 52: 140'0" x 40'0"
- Section 53: 140'0" x 40'0"
- Section 54: 140'0" x 40'0"
- Section 55: 140'0" x 40'0"
- Section 56: 140'0" x 40'0"
- Section 57: 140'0" x 40'0"
- Section 58: 140'0" x 40'0"
- Section 59: 140'0" x 40'0"
- Section 60: 140'0" x 40'0"
- Section 61: 140'0" x 40'0"
- Section 62: 140'0" x 40'0"
- Section 63: 140'0" x 40'0"
- Section 64: 140'0" x 40'0"
- Section 65: 140'0" x 40'0"
- Section 66: 140'0" x 40'0"
- Section 67: 140'0" x 40'0"
- Section 68: 140'0" x 40'0"
- Section 69: 140'0" x 40'0"
- Section 70: 140'0" x 40'0"
- Section 71: 140'0" x 40'0"
- Section 72: 140'0" x 40'0"
- Section 73: 140'0" x 40'0"
- Section 74: 140'0" x 40'0"
- Section 75: 140'0" x 40'0"
- Section 76: 140'0" x 40'0"
- Section 77: 140'0" x 40'0"
- Section 78: 140'0" x 40'0"
- Section 79: 140'0" x 40'0"
- Section 80: 140'0" x 40'0"
- Section 81: 140'0" x 40'0"
- Section 82: 140'0" x 40'0"
- Section 83: 140'0" x 40'0"
- Section 84: 140'0" x 40'0"
- Section 85: 140'0" x 40'0"
- Section 86: 140'0" x 40'0"
- Section 87: 140'0" x 40'0"
- Section 88: 140'0" x 40'0"
- Section 89: 140'0" x 40'0"
- Section 90: 140'0" x 40'0"
- Section 91: 140'0" x 40'0"
- Section 92: 140'0" x 40'0"
- Section 93: 140'0" x 40'0"
- Section 94: 140'0" x 40'0"
- Section 95: 140'0" x 40'0"
- Section 96: 140'0" x 40'0"
- Section 97: 140'0" x 40'0"
- Section 98: 140'0" x 40'0"
- Section 99: 140'0" x 40'0"
- Section 100: 140'0" x 40'0"
- Section 101: 140'0" x 40'0"
- Section 102: 140'0" x 40'0"
- Section 103: 140'0" x 40'0"
- Section 104: 140'0" x 40'0"
- Section 105: 140'0" x 40'0"
- Section 106: 140'0" x 40'0"
- Section 107: 140'0" x 40'0"
- Section 108: 140'0" x 40'0"
- Section 109: 140'0" x 40'0"
- Section 110: 140'0" x 40'0"
- Section 111: 140'0" x 40'0"
- Section 112: 140'0" x 40'0"
- Section 113: 140'0" x 40'0"
- Section 114: 140'0" x 40'0"
- Section 115: 140'0" x 40'0"
- Section 116: 140'0" x 40'0"
- Section 117: 140'0" x 40'0"
- Section 118: 140'0" x 40'0"
- Section 119: 140'0" x 40'0"
- Section 120: 140'0" x 40'0"
- Section 121: 140'0" x 40'0"
- Section 122: 140'0" x 40'0"
- Section 123: 140'0" x 40'0"
- Section 124: 140'0" x 40'0"
- Section 125: 140'0" x 40'0"
- Section 126: 140'0" x 40'0"
- Section 127: 140'0" x 40'0"
- Section 128: 140'0" x 40'0"
- Section 129: 140'0" x 40'0"
- Section 130: 140'0" x 40'0"
- Section 131: 140'0" x 40'0"
- Section 132: 140'0" x 40'0"
- Section 133: 140'0" x 40'0"
- Section 134: 140'0" x 40'0"
- Section 135: 140'0" x 40'0"
- Section 136: 140'0" x 40'0"
- Section 137: 140'0" x 40'0"
- Section 138: 140'0" x 40'0"
- Section 139: 140'0" x 40'0"
- Section 140: 140'0" x 40'0"
- Section 141: 140'0" x 40'0"
- Section 142: 140'0" x 40'0"
- Section 143: 140'0" x 40'0"
- Section 144: 140'0" x 40'0"
- Section 145: 140'0" x 40'0"
- Section 146: 140'0" x 40'0"
- Section 147: 140'0" x 40'0"
- Section 148: 140'0" x 40'0"
- Section 149: 140'0" x 40'0"
- Section 150: 140'0" x 40'0"
- Section 151: 140'0" x 40'0"
- Section 152: 140'0" x 40'0"
- Section 153: 140'0" x 40'0"
- Section 154: 140'0" x 40'0"
- Section 155: 140'0" x 40'0"
- Section 156: 140'0" x 40'0"
- Section 157: 140'0" x 40'0"
- Section 158: 140'0" x 40'0"
- Section 159: 140'0" x 40'0"
- Section 160: 140'0" x 40'0"
- Section 161: 140'0" x 40'0"
- Section 162: 140'0" x 40'0"
- Section 163:



| | | |
|--|---|---|
|  | Biuro projektowe EKOPROBUD 43-190 Mikołów, ul. Żwirki i Wigury 65/206 tel. 501 053 972, www.ekoprobudsc.com.pl | |
| | | |
| ADRES INWESTYCJI: | Budynek mieszkalno-usługowy ul. ks. kard. Stefana Wyszyńskiego 46, 48 43-100 Tychy | |
| REMONT BUDYNKU ZLOKALIZOWANEGO PRZY UL. KS. KARD. STEFANA WYSZYŃSKIEGO 46, 48 | | |
| INWENTARYZACJA - ELEWACJA POŁUDNIOWO-ZACHODNIA I PÓŁNOCNO-WSCHODNIA | | |
| ARCHITEKTURA PROJEKTOWAŁ: | mgr inż. arch. L. Wiśniowski nr upr. 743/87 | PODPIS: |
| SPRAWDZIŁ: | mgr inż. arch. Ł. Wengler nr. upr. 6/10/SLOKK | PODPIS: |
| OPRACOWANIE: | mgr inż. N. Kajtoch | PODPIS: |
| KIEROWNIK BIURA: | dr inż. T. Muzyczuk | PODPIS: |
| | | 09-2025 SKALA: 1:200 NR RYS.: 3 |